

POWER LEVER PRO

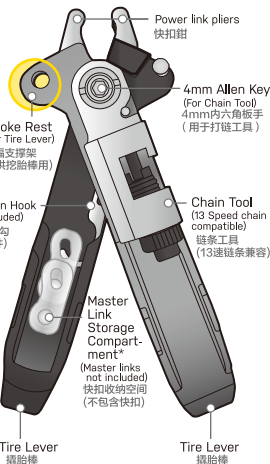
EN CH

Power Lever Pro is compatible with all types of master links. Power Lever Pro 兼容所有类型的快扣。



The chain tool is compatible with single and multi-speed chains up to 13 speed, including Sram® Flattop chains.

链条工具兼容单速和多速链，最高可达13速，包括Sram®平顶链。



NOTE: Power Lever Pro is not designed to be used on heavy duty, thick casing downhill or extreme offroad riding type tires.

Power Lever Pro 不建议用于胎壁较厚实的下坡车或极限越野骑行类型的轮胎。

WARNING

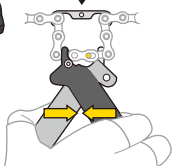
Never exceed the 7Nm torque range when tightening to prevent possible tool damage.

避免工具损坏，紧固时请勿超过7Nm的扭矩范围。

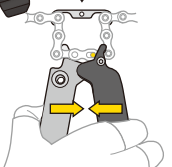
POWER LINK PLIERS

快扣链条拆卸钳

REMOVAL 拆卸



INSTALLATION 安装



CHAIN TOOL

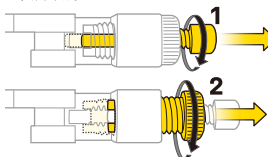
链条工具

DEPLOY 展开

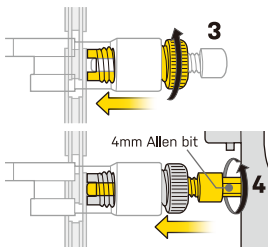


CHAIN BREAKER PIN RELEASE

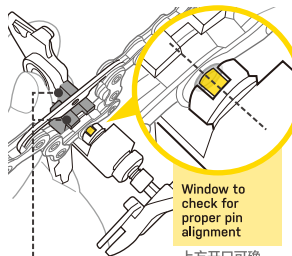
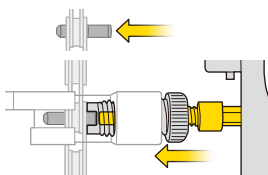
松开顶针



CHAIN PIN REMOVAL 移除插销

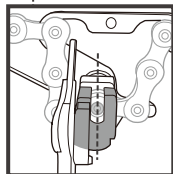


CHAIN PIN INSTALLATION 安装插销



Window to check for proper pin alignment

上方开口可确认顶针是否对准插销

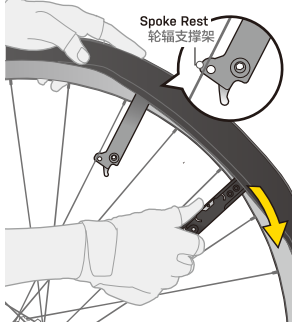


Make sure pin aligns with chain fence to avoid chain tool damage

确认顶针对准插销，避免链条工具损坏

TIRE LEVERS

撬胎棒



Spoke Rest 轮辐支撑架